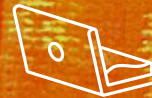


Elements of a computer system

Understanding computers

3rd Edition



PG ONLINE

Objectives

- Distinguish between hardware and software
- Identify Input, Output and Storage devices
- Name at least five pieces of software
- Suggest appropriate input and output devices for a given scenario

What is a computer?

Hardware or software?

What is hardware?

Objects that you can touch, like a music CD. For example:

Disks, disk drives, display screens, keyboards, printers, boards, and chips

What is software?

You cannot 'touch' software. Software refers to the programs that run on a computer, rather like the music playing on a CD

Examples of software:

Windows, MS Word, MS Excel, Kodu and Logo

Input, output and storage devices

What is an output device?

An output device is a piece of computer hardware used to display or output data which has been processed or stored in a computer

Printer, Speaker

What is an input device?

An input device is anything can be used to enter data into a computer

Keyboard, Mouse

What is a storage device?

A storage device is used to permanently record or store data

CD, Hard Drive

What do each of these images represent? Are they hardware or software? Input, output or storage devices?



Computer systems

- Look at **Worksheets 1a and 1b**
 - Determine the input, process and output in each case



Inputs and outputs

- What inputs and outputs are used within this automated supermarket checkout machine?



Copyright

© 2017 PG Online Limited

The contents of this unit are protected by copyright.

This unit and all the worksheets, PowerPoint presentations, teaching guides and other associated files distributed with it are supplied to you by PG Online Limited under licence and may be used and copied by you only in accordance with the terms of the licence. Except as expressly permitted by the licence, no part of the materials distributed with this unit may be used, reproduced, stored in a retrieval system, or transmitted, in any form or by any means, electronic or otherwise, without the prior written permission of PG Online Limited.

Licence agreement

This is a legal agreement between you, the end user, and PG Online Limited. This unit and all the worksheets, PowerPoint presentations, teaching guides and other associated files distributed with it is licensed, not sold, to you by PG Online Limited for use under the terms of the licence.

The materials distributed with this unit may be freely copied and used by members of a single institution on a single site only. You are not permitted to share in any way any of the materials or part of the materials with any third party, including users on another site or individuals who are members of a separate institution. You acknowledge that the materials must remain with you, the licencing institution, and no part of the materials may be transferred to another institution. You also agree not to procure, authorise, encourage, facilitate or enable any third party to reproduce these materials in whole or in part without the prior permission of PG Online Limited.